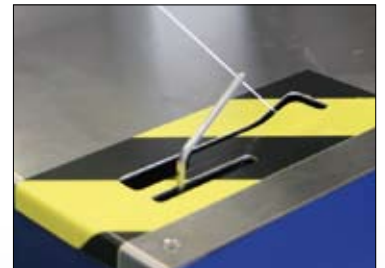


## Bundling machine EMT - AXRO RLC

For bundling small, easily damaged products with elastic string



**Advantages**

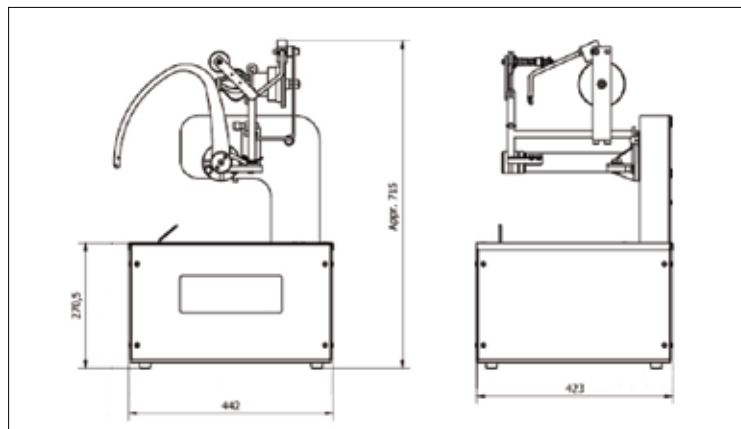
- Mobile, trolley available accessory
- Can be integrated in automatic machine lines
- Extremely easy operation
- All functions are executed automatically after triggering
- Robust, capable of continuous operation
- Minimal maintenance
- Low noise



**Function**

Products are passed along the table surface through the pre-draped elastic string. The machine switches on: the needle arm pulls the elastic string behind the bundel into the tying mechanism. The ends of the elastic string are tied and then cut. A new end of elastic string returns with the needle arm to the „up position“ completing the cycle. The tied products can be removed.

**Data**



<b>Capacity</b>	96 cycles / min.		
<b>Feed-through</b>	height 150 mm, depth 250 mm		
<b>Bench</b>	Stainless steel		
<b>Machine weight</b>	70 kg		
<b>Push-in</b>	from lfrft (standard) to right		
<b>Trigger</b>	mechanical by pushing in the items to be bunled		
<b>String tension</b>	adjustable		
<b>Elastic string</b>	Cylastic PES	Cylastic PCs 1300	Cylastic 3K
Breaking strength	55 N	65 N	110 N
Elongation	260 %	245 %	310 %
<b>Power supply</b>	230 V / 50 Hz, 200 V / 50 Hz, 200 V / 60 Hz (depending on the version) 100-120 V / 50 Hz, 100-120 V / 60 Hz		

**Versions**

Vertical construction, stainless steel model

**Options**

e.g. 4-wheel support frame, foot switch

Subject to Modification.  
 © Copyright 2009 by Cyklop GmbH  
 Protectory notice pursuant to ISO 16016 to be observed

Cyklop GmbH, Postbox 50 12 20,  
 50972 Köln, Germany  
 Industriestraße 133, Rodenkirchen,  
 50996 Köln, Germany

Phone: ++49(0)2236/602 0,  
 Fax Sales: ++49(0)2236/602 228  
 info@cyklop.com,  
 www.cyklop.com



Update 01/2009